



# NexBlu™

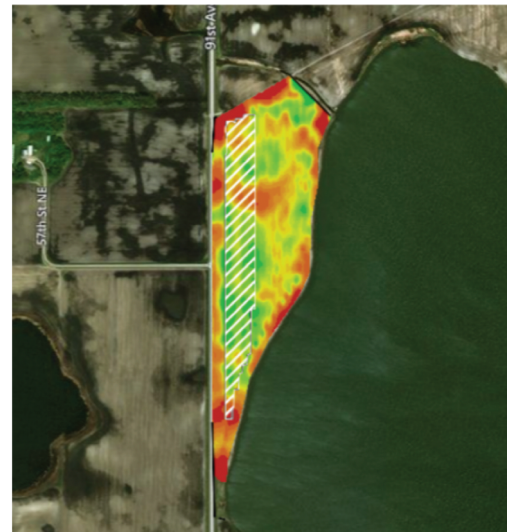
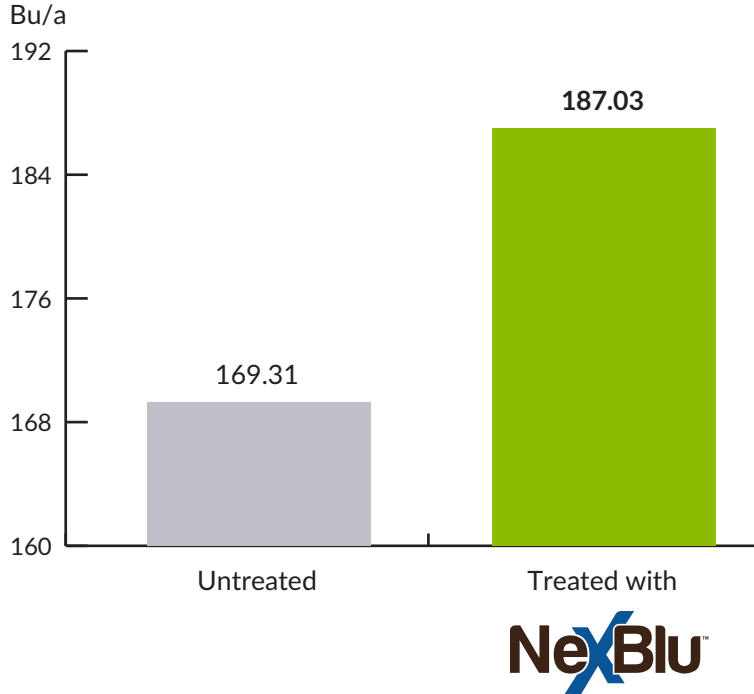
NexBlu™ is the next-level liquid nitrogen technology designed to ensure more value for every pound of applied N. It replaces your standard liquid nitrogen program with the potential for greater performance and yield enhancement through improved nutrient utilization.

## FEATURES

- A complete nitrogen solution
- Promotes more even crop emergence
- Increases soil nutrient availability later in the season
- Improves total nutrient use efficiency

### Corn – Devils Lake, ND (2018)

NexBlu 27 applied at 10 gallons per acre vs UAN 28% applied at 10 gallons per acre



ALWAYS READ AND FOLLOW LABEL DIRECTIONS.

© 2019 Loveland Products, Inc. All Rights Reserved. All of the trademarks and service marks displayed are marks of their respective owners. Check State Registration to make sure product is registered in your state.

LOVELAND PRODUCTS, INC.® | P.O. BOX 1286 | GREELEY, CO 80632 | [www.LovelandProducts.com](http://www.LovelandProducts.com)

**Nutrien**  
Ag Solutions™



**Corn - Devils Lake, ND (2018)**

NexBlu 27 applied at 10 gallons per acre vs UAN 28% applied at 10 gallons per acre



28% UAN

Treated with



CONTACT NUTRIEN AG SOLUTIONS FOR MORE INFORMATION.

ALWAYS READ AND FOLLOW LABEL DIRECTIONS.

© 2019 Loveland Products, Inc. All Rights Reserved. All of the trademarks and service marks displayed are marks of their respective owners. Check State Registration to make sure product is registered in your state. LOVELAND PRODUCTS, INC.® | P.O. BOX 1286 | GREELEY, CO 80632 | [www.LovelandProducts.com](http://www.LovelandProducts.com)

